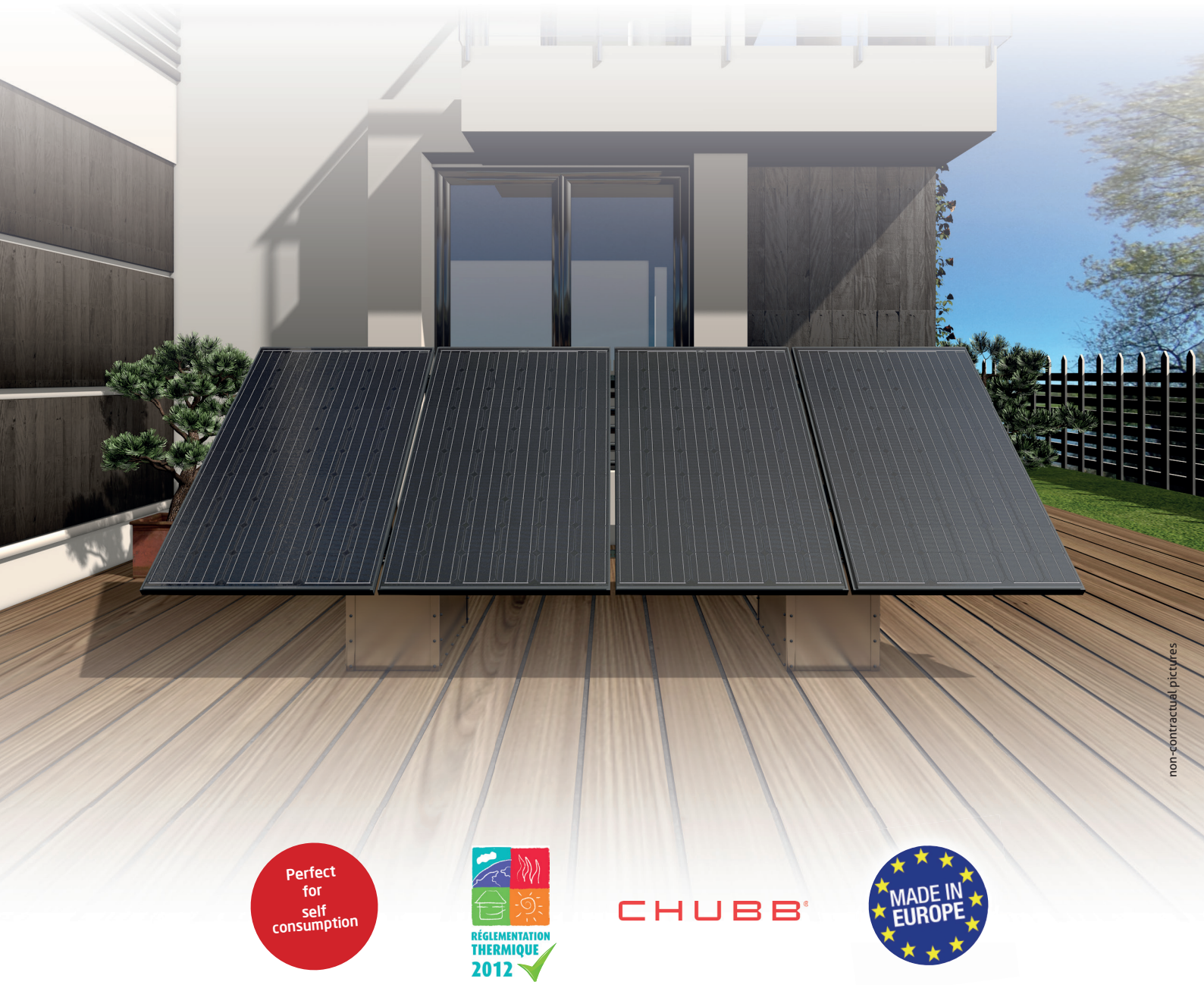


PHOTOVOLTAIC
SELF CONSUMPTION

GSE GROUND SYSTEM™

Ground sun-system for conventional photovoltaic panels (framed)

Functional, Aesthetic,
Quick to install, Simple...



CHUBB®



www.gseintegration.com

RESIDENTIAL PHOTOVOLTAIC

GSE GROUND SYSTEM allows you integration ground sun-system. Specially designed and perfect for self consumption, it offers many advantages :



- **Ideal for flat roofs and ground systems**
- **Responds all problems of non feasibility**
(lack of space on roofs, old roofs, etc.)
- **Installable by blocks of 1 kWp and can fit many requests**
(roof PV installation complement, self-consumption, flat roof, all kind of garden...)

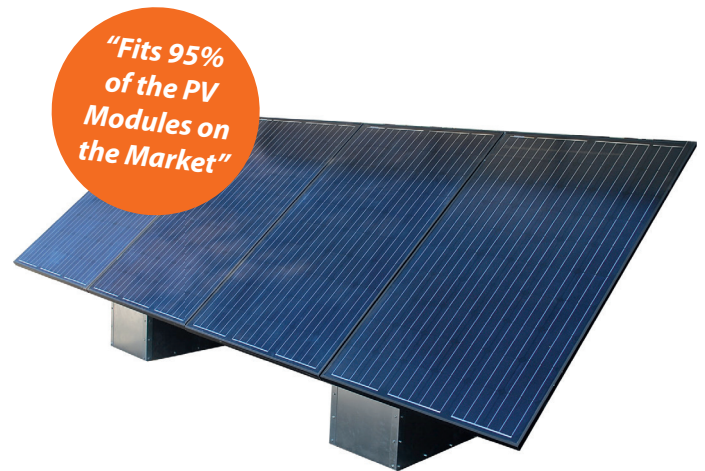
TECHNICAL SPECS

Configuration possibilities	Multiples of 1 line x 2 columns in portrait format
Slope angle	between 19° and 40°
Colours	Silver
Material	Aluminium alloy and Stainless steel
Weight	± 120 kg / kWp (i.e. 4 modules of 250 wp)
System Ballasting	Sand, gravel, cemented slab, cement, etc.
Mounting	Ground mounting on any type of ground, no drilling...
Safety	Possibility of using micro-inverter to reduce the voltage output

**Liability insurance
Trading and Product**

CHUBB
Liability insurance

CHUBB®



*"Fits 95%
of the PV
Modules on
the Market"*

ASSETS

- **Resolves roof space problems**
→ Portrait installation for reduced dimensions
- **Installation time and cost reduced**
- **Compatible with all types of ground**
→ garden, flat roof, parking, sand...
- **Compatible with all sizes of framed modules**
- **Simple and safety to install**
→ ground mounting
- **Compact and lightweight format**
→ supplied in kit form
→ spacing pitch of 0.6 ml between each line
- **100 % Recyclable**
- **No work required on roof**

non-contractual pictures

CONTACT



GSE INTEGRATION

155-159 rue du Dr Bauer. 93400 SAINT-OUEN +33 1 70 32 08 00 contact@gseintegration.com
www.gseintegration.com

